



**REFERENCES FilterOne – FilterBig**  
*Polypropilene housings*





PRODUCT

**FILTERONE 40**

FLOW RATE

**60 m<sup>3</sup>/h (2 x 30 m<sup>3</sup>/h )**

WATER

**BRACKISH WATER**

APPLICATION

**RO PRETREATMENT**

WATER USE

**INDUSTRIAL WATER**

OEM

**Confidential (Italy)**

END USER

**Confidential (Italy)**

SECTOR

**INDUSTRIAL**



PRODUCT

**FILTERONE 40**

FLOW RATE

**108 m<sup>3</sup>/h (4 x 27 m<sup>3</sup>/h )**

WATER

**RO PRETREATMENT**

APPLICATION

**BRACKISH WATER**

WATER USE

**INDUSTRIAL WATER**

OEM

**Confidential (Italy)**

END USER

**Confidential (Italy)**

SECTOR

**INDUSTRIAL**



PRODUCT

**FILTERONE 40**

FLOW RATE

**60 m<sup>3</sup>/h (2 x30 m<sup>3</sup>/h)**

WATER

**BRACKISH WATER**

APPLICATION

**RO PRETREATMENT**

WATER USE

**INDUSTRIAL WATER**

OEM

**Confidential (Italy)**

END USER

**Confidential (Italy)**

SECTOR

**INDUSTRIAL**



PRODUCT

**FILTERONE 40**

FLOW RATE

**27 m<sup>3</sup>/h**

WATER

**BRACKISH WATER**

APPLICATION

**CIP**

WATER USE

**PROCESS WATER**

OEM

**Confidential (Italy)**

END USER

**Confidential (Italy)**

SECTOR

**INDUSTRIAL**



PRODUCT

**FILTERONE 40**

WATER USE

**PROCESS WATER**

FLOW RATE

**120 m<sup>3</sup>/h ( 4 x 30 m<sup>3</sup>/h )**

OEM

**Confidential (Portugal)**

WATER

**DRINKING WATER**

END USER

**Confidential (Spain)**

APPLICATION

**RO PRETREATMENT**

SECTOR

**INDUSTRIAL**



PRODUCT

**FILTERONE 40**

FLOW RATE

**30 m<sup>3</sup> /h**

WATER

**BRACKISH WATER**

APPLICATION

**CIP RO PLANT**

WATER USE

**CLEANING SOLUTION**

OEM

**Confidential (Italy)**

END USER

**Confidential (Poland)**

SECTOR

**INDUSTRIAL**



PRODUCT

**FILTERONE 40**

FLOW RATE

**30 m<sup>3</sup> /h**

WATER

**BRACKISH WATER**

APPLICATION

**UF PRETREATMENT**

WATER USE

**PROCESS WATER**

OEM

**Confidential (Italy)**

END USER

**Confidential (Italy)**

SECTOR

**INDUSTRIAL**



PRODUCT

**FILTERONE 40**

WATER USE

**PROCESS WATER**

FLOW RATE

**120 m<sup>3</sup>/h ( 4 x 30 m<sup>3</sup>/h )**

OEM

**Confidential (Italy)**

WATER

**DRINKING WATER**

END USER

**Confidential (Italy)**

APPLICATION

**RO PRETREATMENT**

SECTOR

**INDUSTRIAL**



PRODUCT

**FILTERONE 40**

FLOW RATE

**150 m<sup>3</sup> /h**

WATER

**BRACKISH WATER**

APPLICATION

**RO PRETREATMENT**

WATER USE

**INDUSTRIAL**

OEM

**Confidential (Portugal)**

END USER

**Confidential (Morocco)**

SECTOR

**INDUSTRIAL**



PRODUCT

**FILTERONE 40**

FLOW RATE

**67 m<sup>3</sup> /h**

WATER

**BRACKISH WATER**

APPLICATION

**RO PRETREATMENT**

WATER USE

**PROCESS WATER**

OEM

**Confidential (Netherlands)**

END USER

**Confidential (Netherlands)**

SECTOR

**AGRICULTURE**



PRODUCT

**FILTERONE 40**

FLOW RATE

**60 m<sup>3</sup> /h**

WATER

**BRACKIS WATER**

APPLICATION

**RO PREATREATMENT**

WATER USE

**DRINKING WATER**

OEM

**Confidential (Italy)**

END USER

**Confidential (Algeria)**

SECTOR

**POWER STATION**



PRODUCT

**FILTERONE 40**

FLOW RATE

**120 m<sup>3</sup> /h**

WATER

**SEA WATER**

APPLICATION

**RO PRETREATMENT**

WATER USE

**DRINKING WATER**

OEM

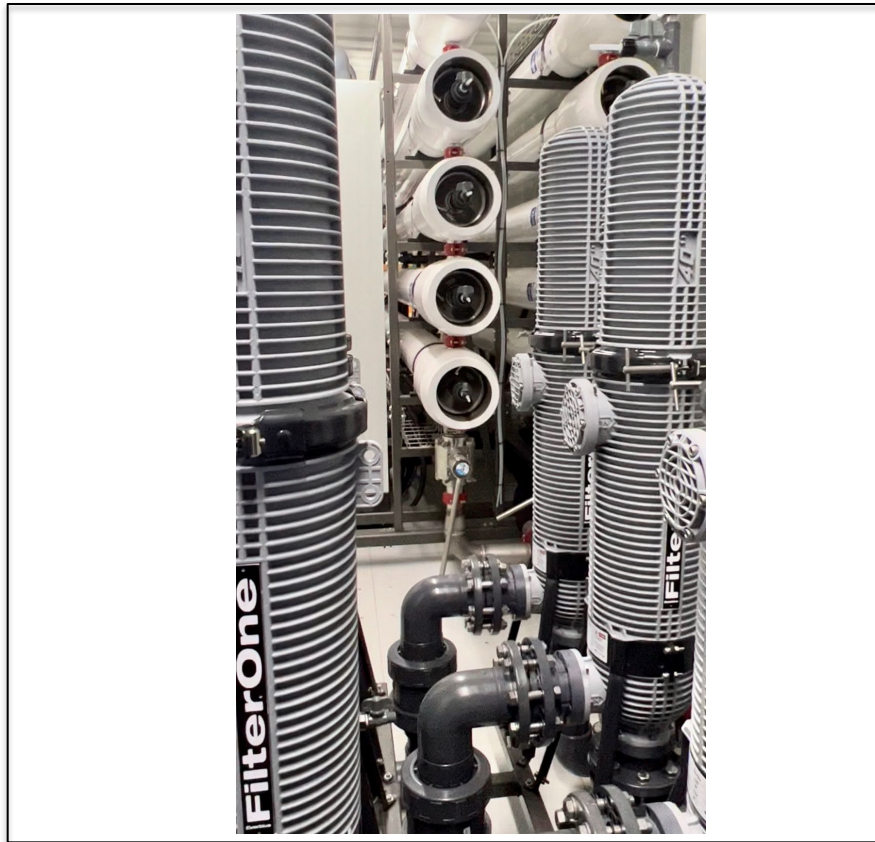
**Confidential (Italy)**

END USER

**Confidential (Italy)**

SECTOR

**MUNICIPAL**



PRODUCT	FILTERONE 40
FLOW RATE	120 m <sup>3</sup> /h
WATER	BRACKIS WATER
APPLICATION	RO PREATTMENT
WATER USE	INDUSTRIAL WATER
OEM	Confidential (Portugal)
END USER	Confidential (Portugal)
SECTOR	MUNICIPAL



PRODUCT

**FILTERONE 40**

FLOW RATE

**60 m<sup>3</sup> /h**

WATER

**SEA WATER**

APPLICATION

**RO PRETREATMENT**

WATER USE

**DRINKING WATER**

OEM

**Confidential (Italy)**

END USER

**Confidential (Italy)**

SECTOR

**MUNICIPAL**



PRODUCT

**FILTERONE 40**

FLOW RATE

**60 m<sup>3</sup> /h ( 2 x 30 m<sup>3</sup> /h )**

WATER

**BRACKISH WATER**

APPLICATION

**RO PRETREATMENT**

WATER USE

**INDUSTRIAL WATER**

OEM

**Confidential (Italy)**

END USER

**Confidential (Italy)**

SECTOR

**INDUSTRIAL**



PRODUCT	<b>FILTERONE 40</b>
FLOW RATE	<b>150 m<sup>3</sup> /h ( 5 x 30 m<sup>3</sup> /h )</b>
WATER	<b>BRACKISH WATER</b>
APPLICATION	<b>RO PRETREATMENT</b>
WATER USE	<b>INDUSTRIAL WATER</b>
OEM	<b>Confidential (Portugal)</b>
END USER	<b>Confidential (Portugal)</b>
SECTOR	<b>INDUSTRIAL</b>



PRODUCT

**FILTERONE 40**

FLOW RATE

**30 m<sup>3</sup> /h**

WATER

**BRACKISH WATER**

APPLICATION

**CIP RO PLANT**

WATER USE

**CLEANING SOLUTION**

OEM

**Confidential (Italy)**

END USER

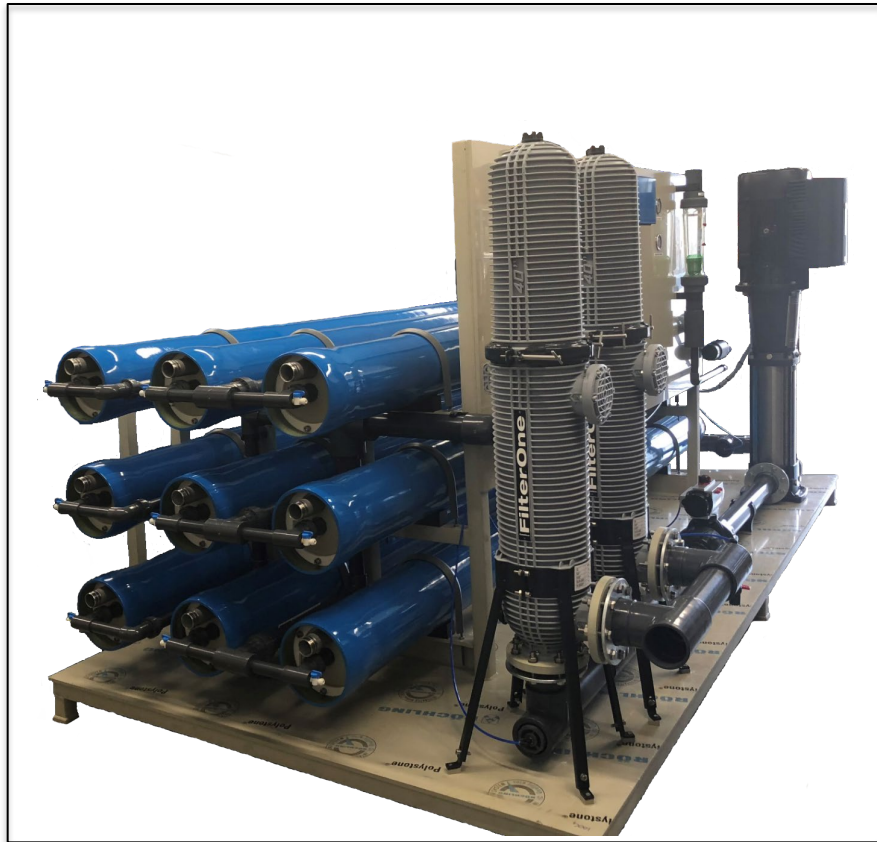
**Confidential (Italy)**

SECTOR

**INDUSTRIAL**



PRODUCT	<b>FILTERONE 40</b>
FLOW RATE	<b>30 m<sup>3</sup> /h</b>
WATER	<b>BRACKISH WATER</b>
APPLICATION	<b>RO PRETREATMENT</b>
WATER USE	<b>INDUSTRIAL WATER</b>
OEM	<b>Confidential (Italy)</b>
END USER	<b>Confidential (Italy)</b>
SECTOR	<b>INDUSTRIAL</b>



PRODUCT

**FILTERONE 40**

FLOW RATE

**60 m<sup>3</sup> /h**

WATER

**BRACKISH WATER**

APPLICATION

**RO PRETREATMENT**

WATER USE

**INDUSTRIAL WATER**

OEM

**Confidential (Italy)**

END USER

**Confidential (Switzerland)**

SECTOR

**INDUSTRIAL**



PRODUCT

**FILTERONE 40**

FLOW RATE

**120 m<sup>3</sup> /h ( 4 x 30 m<sup>3</sup> /h )**

WATER

**BRACKISH WATER**

APPLICATION

**RO PRETREATMENT**

WATER USE

**INDUSTRIAL WATER**

OEM

**Confidential (Italy)**

END USER

**Confidential (Italy)**

SECTOR

**INDUSTRIAL**



PRODUCT

**FILTERONE 40**

FLOW RATE

**60 m<sup>3</sup> /h ( 2 x 30 m<sup>3</sup> /h )**

WATER

**BRACKISH WATER**

APPLICATION

**RO PRETREATMENT**

WATER USE

**INDUSTRIAL WATER**

OEM

**Confidential (Italy)**

END USER

**Confidential (Italy)**

SECTOR

**INDUSTRIAL**



PRODUCT

**FILTERONE 40**

FLOW RATE

**30 m<sup>3</sup> /h**

WATER

**BRACKISH WATER**

APPLICATION

**RO PRETREATMENT**

WATER USE

**INDUSTRIAL WATER**

OEM

**Confidential (Italy)**

END USER

**Confidential (Israel)**

SECTOR

**ELECTRONIC**



PRODUCT

**FILTERONE 40**

FLOW RATE

**90 m<sup>3</sup> /h ( 3 x 30 m<sup>3</sup> /h )**

WATER

**BRACKISH WATER**

APPLICATION

**RO PRETREATMENT**

WATER USE

**INDUSTRIAL WATER**

OEM

**Confidential (Italy)**

END USER

**Confidential (Italy)**

SECTOR

**CHEMICAL**



PRODUCT

**FILTERONE 40**

FLOW RATE

**30 m<sup>3</sup> /h**

WATER

**BRACKISH WATER**

APPLICATION

**RO PRETREATMENT**

WATER USE

**INDUSTRIAL WATER**

OEM

**Confidential (Italy)**

END USER

**Confidential (Italy)**

SECTOR

**INDUSTRIAL**



PRODUCT

**FILTERONE 40**

FLOW RATE

**30 m<sup>3</sup> /h**

WATER

**BRACKISH WATER**

APPLICATION

**RO PRETREATMENT**

WATER USE

**INDUSTRIAL WATER**

OEM

**Confidential (Germany)**

END USER

**Confidential (Germany)**

SECTOR

**INDUSTRIAL**



PRODUCT

**FILTERONE 40**

FLOW RATE

**30 m<sup>3</sup> /h**

WATER

**BRACKISH WATER**

APPLICATION

**RO PRETREATMENT**

WATER USE

**INDUSTRIAL WATER**

OEM

**Confidential (Netherlands)**

END USER

**Confidential (Netherlands)**

SECTOR

**INDUSTRIAL**



PRODUCT

**FILTERONE 40**

FLOW RATE

**240 m<sup>3</sup> /h ( 8 x 30 m<sup>3</sup> /h )**

WATER

**SEA WATER**

APPLICATION

**RO PRETREATMENT**

WATER USE

**DRINKING WATER**

OEM

**Confidential (Italy)**

END USER

**Confidential (Italy)**

SECTOR

**MUNICIPAL**



PRODUCT

**FILTERONE 40**

FLOW RATE

**120 m<sup>3</sup>/h ( 4 x 30 m<sup>3</sup>/h )**

WATER

**BRACKISH WATER**

APPLICATION

**RO PRETREATMENT**

WATER USE

**INDUSTRIAL WATER**

OEM

**Confidential (Netherlands)**

END USER

**Confidential (Netherlands)**

SECTOR

**ELECTRONIC**



PRODUCT

**FILTERONE 40**

FLOW RATE

**60 m<sup>3</sup> /h ( 2 x 30 m<sup>3</sup> /h )**

WATER

**BRACKISH WATER**

APPLICATION

**RO PRETREATMENT**

WATER USE

**INDUSTRIAL WATER**

OEM

**Confidential (Italy)**

END USER

**Confidential (Italy)**

SECTOR

**INDUSTRIAL**



PRODUCT

**FILTERONE 40**

FLOW RATE

**60 m<sup>3</sup> /h ( 2 x 30 m<sup>3</sup> /h )**

WATER

**BRACKISH WATER**

APPLICATION

**RO PRETREATMENT**

WATER USE

**INDUSTRIAL WATER**

OEM

**Confidential (Italy)**

END USER

**Confidential (Italy)**

SECTOR

**INDUSTRIAL**



PRODUCT

**FILTERONE 40**

FLOW RATE

**240 m<sup>3</sup> /h ( 8 x 30 m<sup>3</sup> /h )**

WATER

**SEA WATER**

APPLICATION

**RO PRETREATMENT**

WATER USE

**DRINKING WATER**

OEM

**Confidential (Italy)**

END USER

**Confidential (Italy)**

SECTOR

**MUNICIPAL**



PRODUCT

**FILTERONE 40**

FLOW RATE

**480 m<sup>3</sup> /h ( 16 x 30 m<sup>3</sup> /h )**

WATER

**SEA WATER**

APPLICATION

**RO PRETREATMENT**

WATER USE

**DRINKING WATER**

OEM

**Confidential (Italy)**

END USER

**Confidential (Italy)**

SECTOR

**MUNICIPAL**



PRODUCT

**FILTERONE 40**

FLOW RATE

**90 m<sup>3</sup> /h ( 3 x 30 m<sup>3</sup> /h )**

WATER

**BRACKISH WATER**

APPLICATION

**RO PRETREATMENT**

WATER USE

**WATER FOR COSMETICS**

OEM

**Confidential (Italy)**

END USER

**Confidential (Italy)**

SECTOR

**COSMETICS**



PRODUCT

**FILTERONE 40**

FLOW RATE

**120 m<sup>3</sup> /h ( 4 x 30 m<sup>3</sup> /h )**

WATER

**SEA WATER**

APPLICATION

**RO PRETREATMENT**

WATER USE

**DRINKING WATER**

OEM

**Confidential (Italy)**

END USER

**Confidential (Italy)**

SECTOR

**CRUISE SHIP**



PRODUCT

**FILTERONE 40**

FLOW RATE

**60 m<sup>3</sup> /h ( 2 x 30 m<sup>3</sup> /h )**

WATER

**SEA WATER**

APPLICATION

**RO PRETREATMENT**

WATER USE

**DRINKING WATER**

OEM

**Confidential (Italy)**

END USER

**Confidential (Cape Verde)**

SECTOR

**HOTELS & RESORTS**



PRODUCT

**FILTERONE 40**

FLOW RATE

**90 m<sup>3</sup> /h ( 3 x 30 m<sup>3</sup> /h )**

WATER

**SEA WATER**

APPLICATION

**RO PRETREATMENT**

WATER USE

**DRINKING WATER**

OEM

**Confidential (Italy)**

END USER

**Confidential (Italy)**

SECTOR

**CRUISE SHIP**



PRODUCT

**FILTERONE 40**

FLOW RATE

**300 m<sup>3</sup> /h ( 10 x 30 m<sup>3</sup> /h )**

WATER

**BRACKISH WATER**

APPLICATION

**RO PRETREATMENT**

WATER USE

**DRINKING WATER**

OEM

**Confidential (Italy)**

END USER

**Confidential (Iran)**

SECTOR

**MUNICIPAL**



PRODUCT

**FILTERONE 40**

FLOW RATE

**30 m<sup>3</sup> /h**

WATER

**BRACKISH WATER**

APPLICATION

**RO PRETREATMENT**

WATER USE

**INDUSTRIAL WATER**

OEM

**Confidential (Germany)**

END USER

**Confidential (Germany)**

SECTOR

**INDUSTRIAL**



PRODUCT

**FILTERONE 40**

FLOW RATE

**60 m<sup>3</sup> /h ( 2 x 30 m<sup>3</sup> /h )**

WATER

**SEA WATER**

APPLICATION

**RO PRETREATMENT**

WATER USE

**DRINKING WATER**

OEM

**Confidential (Italy)**

END USER

**Confidential (Italy)**

SECTOR

**CRUISE SHIP**



PRODUCT

**FILTERONE 40**

FLOW RATE

**120 m<sup>3</sup> /h ( 4 x 30 m<sup>3</sup> /h )**

WATER

**BRACKISH WATER**

APPLICATION

**FINAL FILTRATION**

WATER USE

**DRINKING WATER**

OEM

**Confidential (Italy)**

END USER

**Confidential (Italy)**

SECTOR

**MUNICIPAL**



PRODUCT

**FILTERONE 40**

FLOW RATE

**120 m<sup>3</sup> /h ( 4 x 30 m<sup>3</sup> /h )**

WATER

**SEA WATER**

APPLICATION

**RO PRETREATMENT**

WATER USE

**DRINKING WATER**

OEM

**Confidential (Italy)**

END USER

**Confidential (Italy)**

SECTOR

**MUNICIPAL**



PRODUCT

**FILTERONE 40**

FLOW RATE

**120 m<sup>3</sup> /h ( 4 x 30 m<sup>3</sup> /h )**

WATER

**SEA WATER**

APPLICATION

**RO PRETREATMENT**

WATER USE

**DRINKING WATER**

OEM

**Confidential (Italy)**

END USER

**Confidential (Italy)**

SECTOR

**MUNICIPAL**



PRODUCT

**FILTERONE 40**

FLOW RATE

**30 m<sup>3</sup> /h**

WATER

**BRACKISH WATER**

APPLICATION

**CIP RO PLANT**

WATER USE

**CLEANING SOLUTION**

OEM

**Confidential (Italy)**

END USER

**Confidential (Italy)**

SECTOR

**INDUSTRIAL**



PRODUCT

**FILTERONE 40**

FLOW RATE

**30 m<sup>3</sup> /h**

WATER

**BRACKISH WATER**

APPLICATION

**RO PRETREATMENT**

WATER USE

**INDUSTRIAL WATER**

OEM

**Confidential (Italy)**

END USER

**Confidential (Italy)**

SECTOR

**INDUSTRIAL**



PRODUCT

**FILTERONE 40**

WATER USE

**DRINKING WATER**

FLOW RATE

**720 m<sup>3</sup> /h ( 24 x 30 m<sup>3</sup> /h )**

OEM

**Confidential (Italy)**

WATER

**SEA WATER**

END USER

**Confidential (Italy)**

APPLICATION

**RO PRETREATMENT**

SECTOR

**MUNICIPAL**



PRODUCT

**FILTERONE 23**

FLOW RATE

**15 m<sup>3</sup> /h**

WATER

**SEA WATER**

APPLICATION

**CIP**

WATER USE

**PROCESS WATER**

OEM

**Confidential (Italy)**

END USER

**Confidential (Tunisia)**

SECTOR

**INDUSTRIAL**



PRODUCT	FILTERONE 23
FLOW RATE	15 m <sup>3</sup> /h
WATER	BRACKISH WATER
APPLICATION	RO PRETREATMENT
WATER USE	INDUSTRIAL
OEM	Confidential (United Kingdom)
END USER	Confidential (United Kingdom)
SECTOR	INDUSTRIAL



PRODUCT

**FILTERONE 23**

FLOW RATE

**15 m<sup>3</sup> /h**

WATER

**BRACKISH WATER**

APPLICATION

**RO PRETREATMENT**

WATER USE

**INDUSTRIAL**

OEM

**Confidential (Italy)**

END USER

**Confidential (Italy)**

SECTOR

**MUNICIPAL**



PRODUCT

**FILTERONE 23**

FLOW RATE

**15 m<sup>3</sup> /h**

WATER

**BRACKISH WATER**

APPLICATION

**RO PRETREATMENT**

WATER USE

**INDUSTRIAL**

OEM

**Confidential (United Kingdom)**

END USER

**Confidential (South Africa)**

SECTOR

**COSMETICS**



PRODUCT

**FILTERONE 23**

FLOW RATE

**15 m<sup>3</sup> /h**

WATER

**BRACKISH WATER**

APPLICATION

**RO PRETREATMENT**

WATER USE

**INDUSTRIAL**

OEM

**Confidential (United Kingdom)**

END USER

**Confidential (United Kingdom)**

SECTOR

**INDUSTRIAL**



PRODUCT

**FILTERONE 23**

FLOW RATE

**15 m<sup>3</sup> /h**

WATER

**BRACKISH WATER**

APPLICATION

**RO PRETREATMENT**

WATER USE

**INDUSTRIAL**

OEM

**Confidential (Portugal)**

END USER

**Confidential (Portugal)**

SECTOR

**FOOD**



PRODUCT

**FILTERONE 23**

FLOW RATE

**15 m<sup>3</sup> /h**

WATER

**BRACKISH WATER**

APPLICATION

**RO PRETREATMENT**

WATER USE

**INDUSTRIAL**

OEM

**Confidential (United Kingdom)**

END USER

**Confidential (United Kingdom)**

SECTOR

**INDUSTRIAL**



PRODUCT

**FILTERONE 23**

FLOW RATE

**15 m<sup>3</sup> /h**

WATER

**BRACKISH WATER**

APPLICATION

**RO PRETREATMENT**

WATER USE

**INDUSTRIAL**

OEM

**Confidential (United Kingdom)**

END USER

**Confidential (United Kingdom)**

SECTOR

**INDUSTRIAL**



PRODUCT

**FILTERONE 23**

FLOW RATE

**15 m<sup>3</sup> /h**

WATER

**BRACKISH WATER**

APPLICATION

**RO PRETREATMENT**

WATER USE

**DRINKING WATER**

OEM

**Confidential (Italy)**

END USER

**Confidential (Haiti)**

SECTOR

**MUNICIPAL**



PRODUCT

**FILTERBIG**

FLOW RATE

**36 m<sup>3</sup>/h (2 x 9 m<sup>3</sup>/h)**

WATER

**BRACKISH WATER**

APPLICATION

**PROCESS WATER**

WATER USE

**INDUSTRIAL WATER**

OEM

**Confidential (Netherlands)**

END USER

**Confidential (Netherlands)**

SECTOR

**PHARMACEUTICAL**



PRODUCT

**FILTERBIG**

FLOW RATE

**9 m<sup>3</sup> /h**

WATER

**BRACKISH WATER**

APPLICATION

**INDUSTRIAL**

WATER USE

**INDUSTRIAL WATER**

OEM

**Confidential (Italy)**

END USER

**Confidential (Italy)**

SECTOR

**INDUSTRIAL**



PRODUCT	<b>FILTERBIG</b>
FLOW RATE	<b>18 m<sup>3</sup> /h (2 x 9 m<sup>3</sup> /h)</b>
WATER	<b>SEA WATER</b>
APPLICATION	<b>RO PRETREATMENT</b>
WATER USE	<b>INDUSTRIAL WATER</b>
OEM	<b>Confidential (The Netherlands)</b>
END USER	<b>Confidential (Belgium)</b>
SECTOR	<b>CRUISE SHIP</b>



PRODUCT	FILTERBIG
FLOW RATE	18 m <sup>3</sup> /h (2 x 9 m <sup>3</sup> /h)
WATER	SEA WATER
APPLICATION	RO PRETREATMENT
WATER USE	INDUSTRIAL WATER
OEM	Confidential (The Netherlands)
END USER	Confidential (The Netherlands)
SECTOR	CRUISE SHIP



PRODUCT

**FILTERBIG**

FLOW RATE

**18 m<sup>3</sup> /h (2 x 9 m<sup>3</sup> /h)**

WATER

**SEA WATER**

APPLICATION

**RO PRETREATMENT**

WATER USE

**PROCESS WATER**

OEM

**Confidential (Italy)**

END USER

**Confidential (Serbia)**

SECTOR

**INDUSTRIAL**



PRODUCT

**FILTERBIG**

FLOW RATE

**4,5 m<sup>3</sup> /h**

WATER

**SEA WATER**

APPLICATION

**RO PRETREATMENT**

WATER USE

**PROCESS WATER**

OEM

**Confidential (Italy)**

END USER

**Confidential (Malta)**

SECTOR

**CRUISE SHIP**



PRODUCT

**FILTERBIG**

FLOW RATE

**9 m<sup>3</sup> /h**

WATER

**SEA WATER**

APPLICATION

**RO PRETREATMENT**

WATER USE

**PROCESS WATER**

OEM

**Confidential (Italy)**

END USER

**Confidential (Tunisia)**

SECTOR

**INDUSTRIAL**



PRODUCT

**FILTERBIG**

FLOW RATE

**4,5 m<sup>3</sup> /h**

WATER

**BRACKISH**

APPLICATION

**RO PRETREATMENT**

WATER USE

**BEER PRODUCTION**

OEM

**Confidential (Italy)**

END USER

**Confidential (Italy)**

SECTOR

**INDUSTRIAL**



PRODUCT

**FILTERBIG**

FLOW RATE

**2 x 9 m<sup>3</sup> /h**

WATER

**BRACKISH**

APPLICATION

**RO PRETREATMENT**

WATER USE

**INDUSTRIAL**

OEM

**Confidential (Italy)**

END USER

**Confidential (Italy)**

SECTOR

**INDUSTRIAL**



PRODUCT

**FILTERBIG**

FLOW RATE

**9 m<sup>3</sup> /h**

WATER

**BRACKISH**

APPLICATION

**RO PRETREATMENT**

WATER USE

**INDUSTRIAL**

OEM

**Confidential (Italy)**

END USER

**Confidential (Italy)**

SECTOR

**CONFIDENTIAL**



PRODUCT

**FILTERBIG**

FLOW RATE

**6 x 9 m<sup>3</sup> /h**

WATER

**BRACKISH**

APPLICATION

**PRE FILTRATION**

WATER USE

**BEER PRODUCTION**

OEM

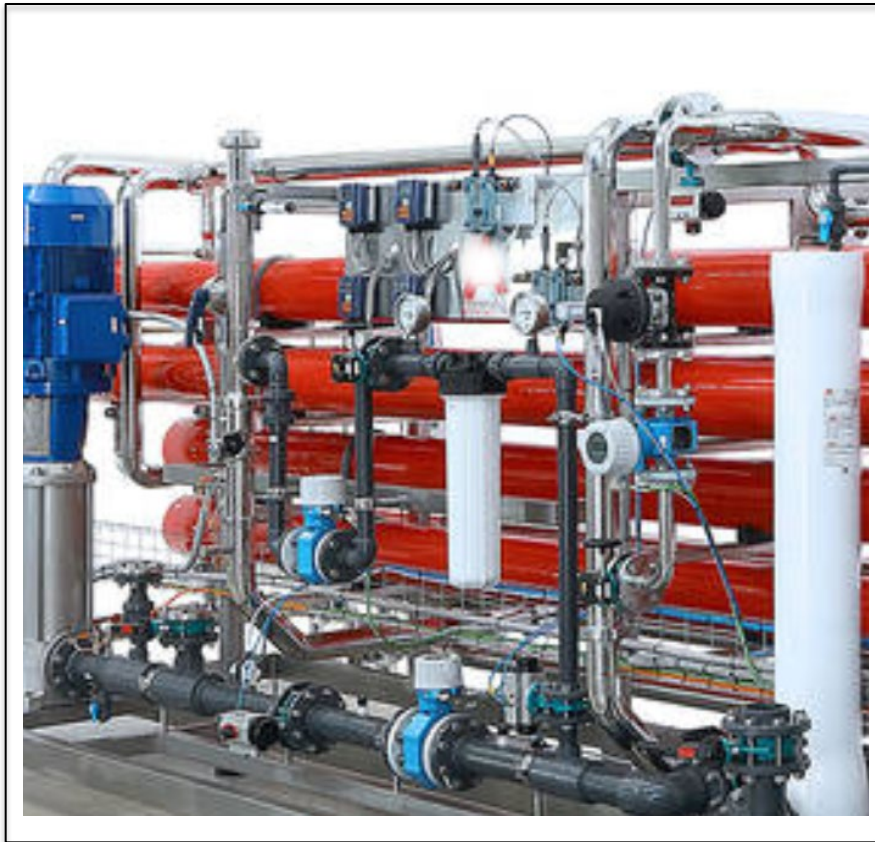
**Confidential (Germany)**

END USER

**Confidential (Germany)**

SECTOR

**CONFIDENTIAL**



PRODUCT

**FILTERBIG**

FLOW RATE

**9 m<sup>3</sup> /h**

WATER

**BRACKISH**

APPLICATION

**RO PRETREATMENT**

WATER USE

**INDUSTRIAL**

OEM

**Confidential (Italy)**

END USER

**Confidential (UAE)**

SECTOR

**BEVERAGE**



PRODUCT

**FILTERBIG**

FLOW RATE

**2 x 9 m<sup>3</sup> /h**

WATER

**BRACKISH**

APPLICATION

**RO PRETREATMENT**

WATER USE

**INDUSTRIAL**

OEM

**Confidential (Germany)**

END USER

**Confidential (Germany)**

SECTOR

**INDUSTRIAL**



PRODUCT

**FILTERBIG**

FLOW RATE

**3 x 9 m<sup>3</sup> /h**

WATER

**BRACKISH**

APPLICATION

**RO PRETREATMENT**

WATER USE

**INDUSTRIAL**

OEM

**Confidential (Germany)**

END USER

**Confidential (Germany)**

SECTOR

**INDUSTRIAL**



**GRAZIE PER L'ATTENZIONE**

