

CARATTERISTICHE - FEATURES

Tipo - Type	Tronchetto Victaulic – a saldare <i>Victaulic – weld pipe</i>
Materiale - Material	Acciaio AISI 316 (tubo senza saldatura) <i>AISI 316 Stainless Steel (non welded pipe)</i>

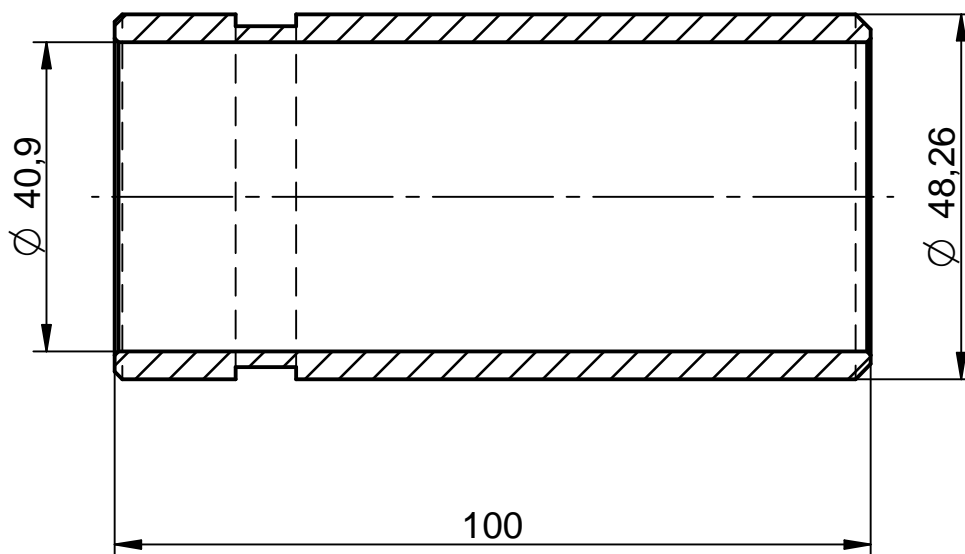
Codice Code	Descrizione Description	Misura * Size	Ø est. Ext. Ø mm
VIC040316VS048	Tronchetto Victaulic-saldare in acciaio AISI316 Style 40 S/40 Stainless steel AISI316 Victaulic – weld pipe Style 40 S/40	1" ½	48,3
VIC040316VS060	Tronchetto Victaulic-saldare in acciaio AISI316 Style 40 S/40 Stainless steel AISI316 Victaulic – weld pipe Style 40 S/40	2"	60,3
VIC040316VS089	Tronchetto Victaulic-saldare in acciaio AISI316 Style 40 S/40 Stainless steel AISI316 Victaulic – weld pipe Style 40 S/40	3"	88,9

ATTENZIONE: I tronchetti STYLE 40 in AISI 316 sono utilizzabili solo con giunti originali VICTAULIC modello STYLE 75 e STYLE 475


ATTENTION: The pipes STYLE 40 made in AISI 316 must be used only with the original VICTAULIC couplings model STYLE 75 and STYLE 475

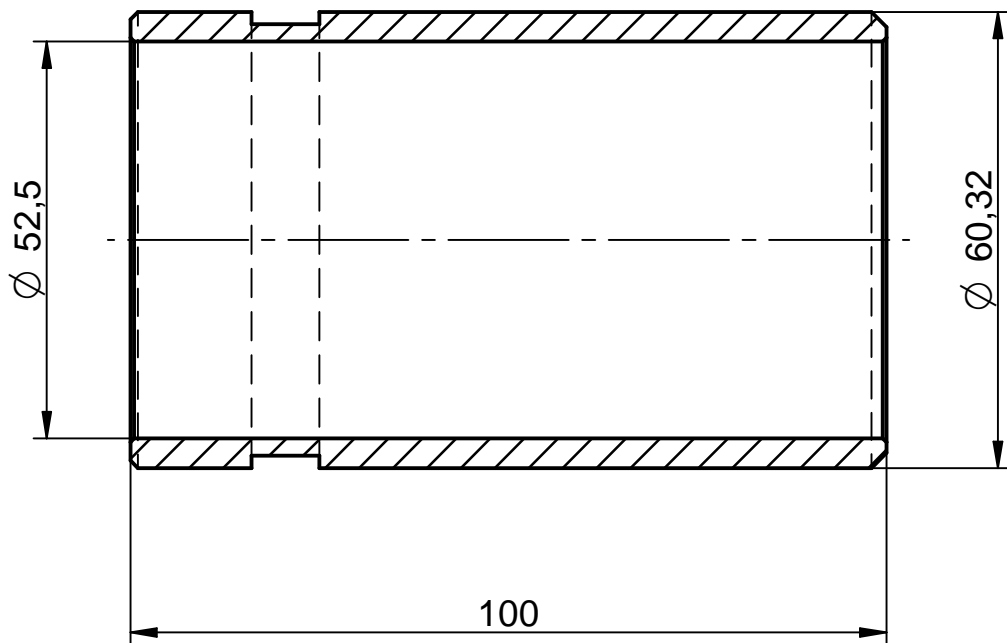
STYLE 40







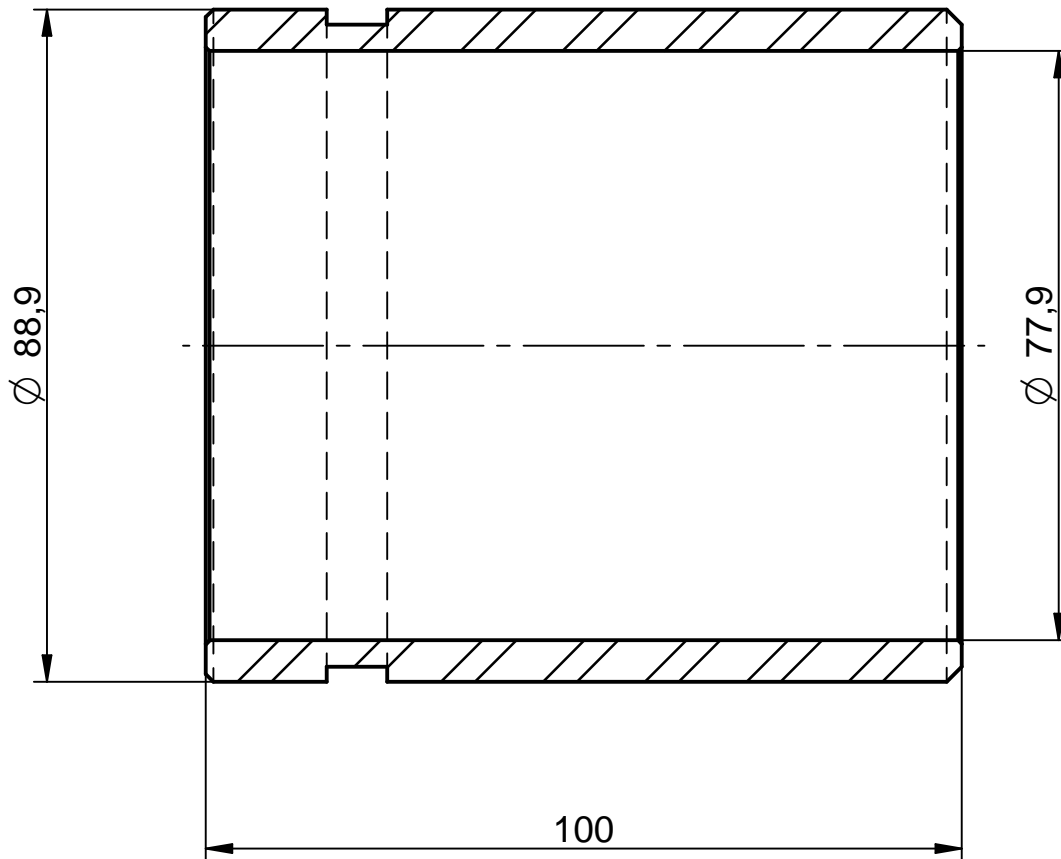
Materiale : TUBO S/S Ø48,26 x 3,68 AISI 316

POS.	CODE	DENOMINATION			QUANTITY	MATERIALS
ALL DIMENSIONS MILLIMETERS	ALL SURFACES FINISH ROUGHNESS IN Ra μm	GENERAL TOLLERANCES UNLESS OTHERWISE SPECIFIED UNI-EN 22768-mK UNI-EN 22768-c			NOT QUOTED FILLET R=0.3 CHAMFER 0.3x45°	
SIMILAR TO	CRITICAL INDEX	WORK ORDER	JOB	QUANTITY	DRAWN DATE 14/01/2016 BY Tecnico	APPROVED DATE - BY -
DENOMINATION S/40 TRONCHETTO A SALDARE 1"1/2 AISI 316					CODE VIC040316VS048	REV.
			MODIFICATION		DATE	BY
			BARCODE			SCALE 1:1
<small>EVERBLUE srl www.everblue.it info@everblue.it REPRODUCTION IS PROHIBITED - ALL RIGHTS RESERVED ACCORDING TO THE LAW</small>						





Materiale : TUBO S/S Ø.60,32 x 3,91 AISI 316

POS.	CODE	DENOMINATION			QUANTITY	MATERIALS	
ALL DIMENSIONS MILLIMETERS	ALL SURFACES FINISH ROUGHNESS IN Ra μm	GENERAL TOLLERANCES UNLESS OTHERWISE SPECIFIED UNI-EN 22768-mK UNI-EN 22768-c			NOT QUOTED FILLET R=0.3 CHAMFER 0.3x45°		
SIMILAR TO	CRITICAL INDEX	WORK ORDER	JOB	QUANTITY	DRAWN DATE 14/01/2016 BY Tecnico	APPROVED DATE - BY -	
DENOMINATION S/40 TRONCHETTO A SALDARE 2" AISI 316					CODE VIC040316VS060		REV.
				MODIFICATION		DATE	BY
				BARCODE		SCALE 1:1	PROJECTION 
<small>EVERBLUE srl. www.everblue.it info@everblue.it REPRODUCTION IS PROHIBITED - ALL RIGHTS RESERVED ACCORDING TO THE LAW</small>							



Materiale : TUBO S/S D.88,9 x 5,49 AISI 316

POS.	CODE	DENOMINATION			QUANTITY	MATERIALS	
ALL DIMENSIONS MILLIMETERS	ALL SURFACES FINISH ROUGHNESS IN Ra μm	GENERAL TOLLERANCES UNLESS OTHERWISE SPECIFIED UNI-EN 22768-mK UNI-EN 22768-c			NOT QUOTED FILLET R=0.3 CHAMFER 0.3x45°		
SIMILAR TO	CRITICAL INDEX	WORK ORDER	JOB	QUANTITY	DRAWN DATE 14/01/2016 BY Tecnico	APPROVED DATE _ BY _	
DENOMINATION S/40 TRONCHETTO A SALDARE 3" AISI 316					CODE VIC040316VS089		REV.
 <small>EVERBLUE srl www.everblue.it info@everblue.it</small>				MODIFICATION		DATE	BY
				BARCODE		SCALE 1:1	PROJECTION 
<small>REPRODUCTION IS PROHIBITED - ALL RIGHTS RESERVED ACCORDING TO THE LAW</small>							